

Go To - U reward points: Smoothing out demand in charging stations



National Technical University of Athens
Decision Support Systems Laboratory

Panos Skaloumpakas
Christos Stefanatos

Driver Challenge Addressed



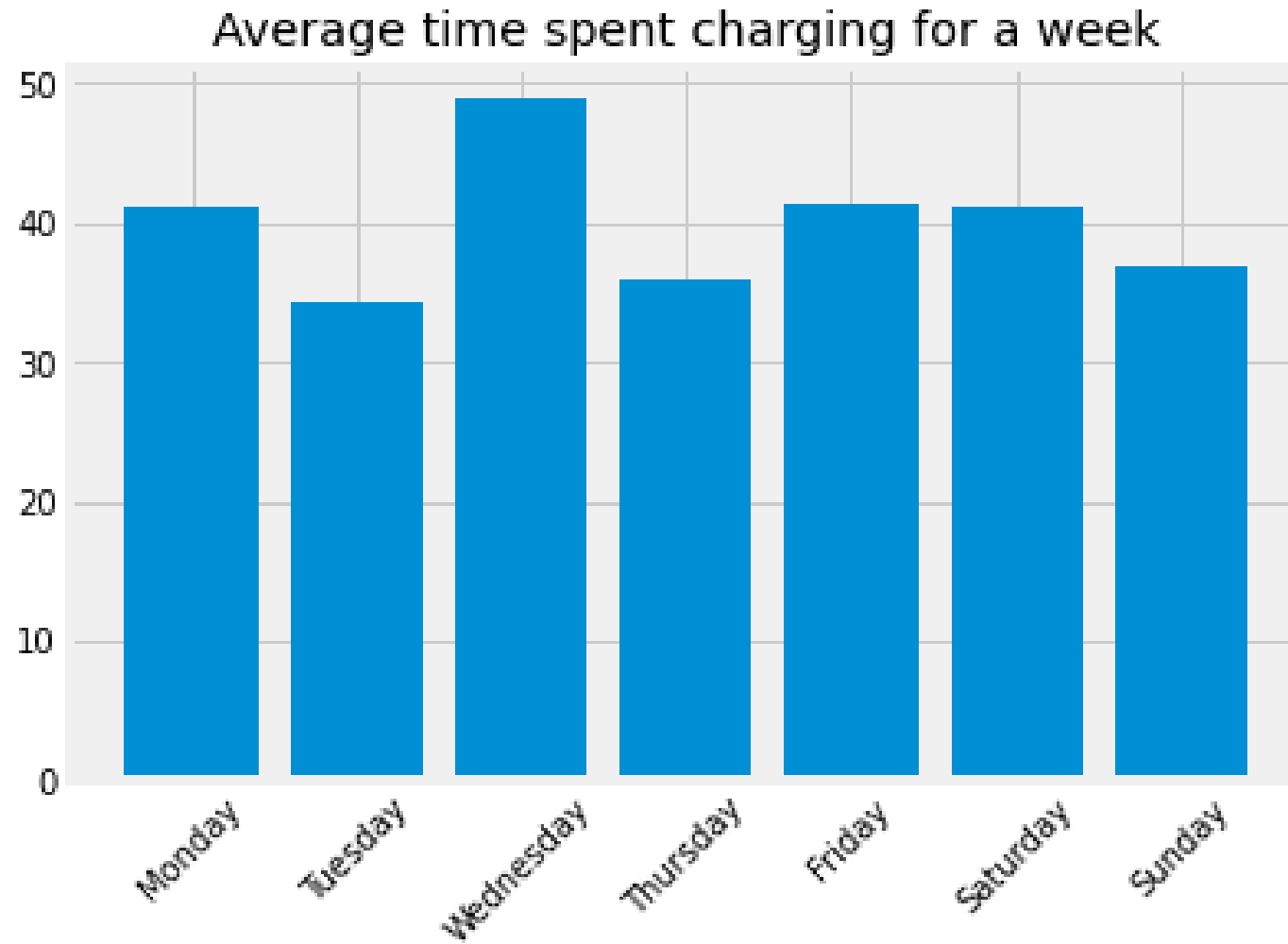
Destination Charging



On-route Charging

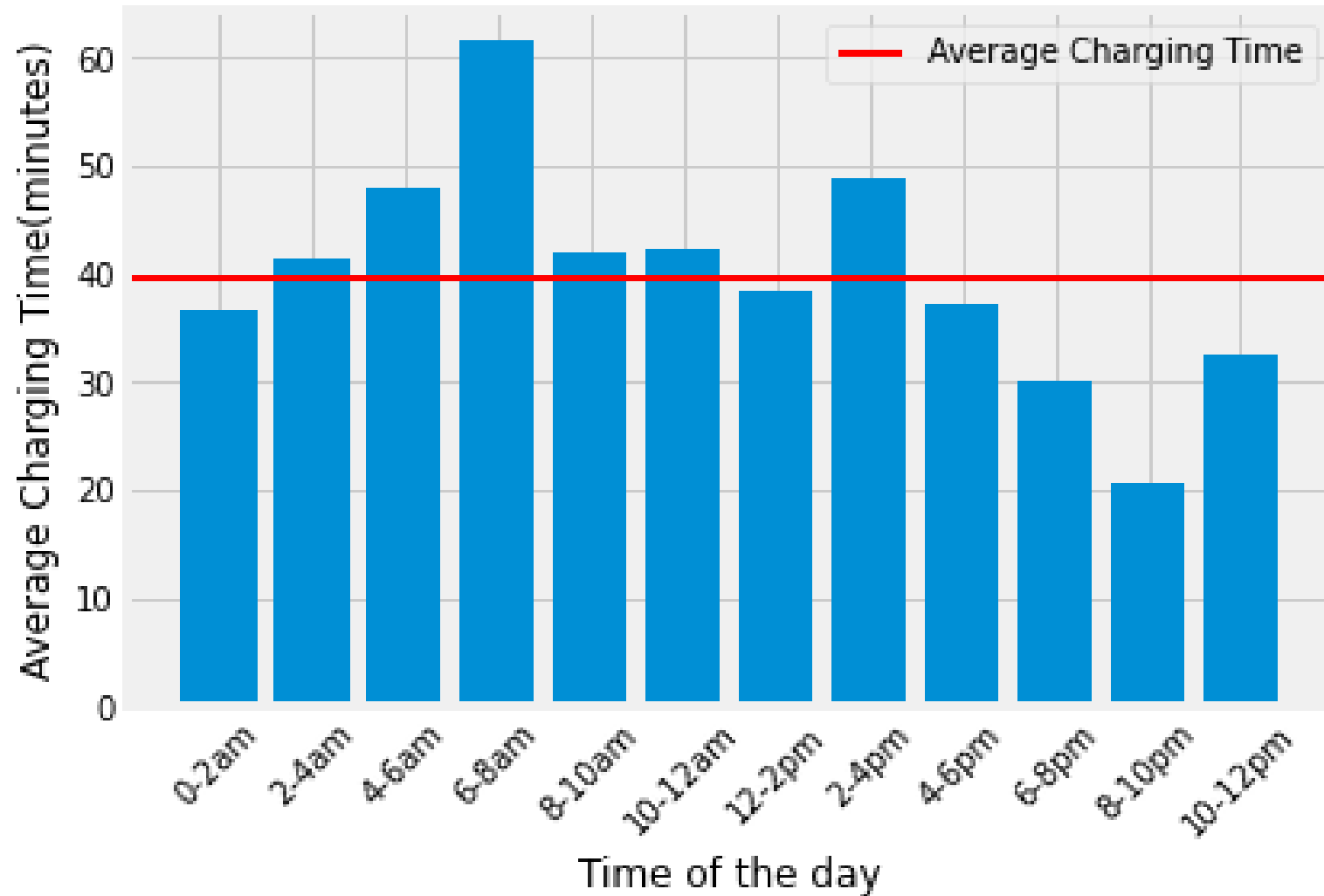
Challenge: Will the station be available when I get there ?

Go to U Historical data

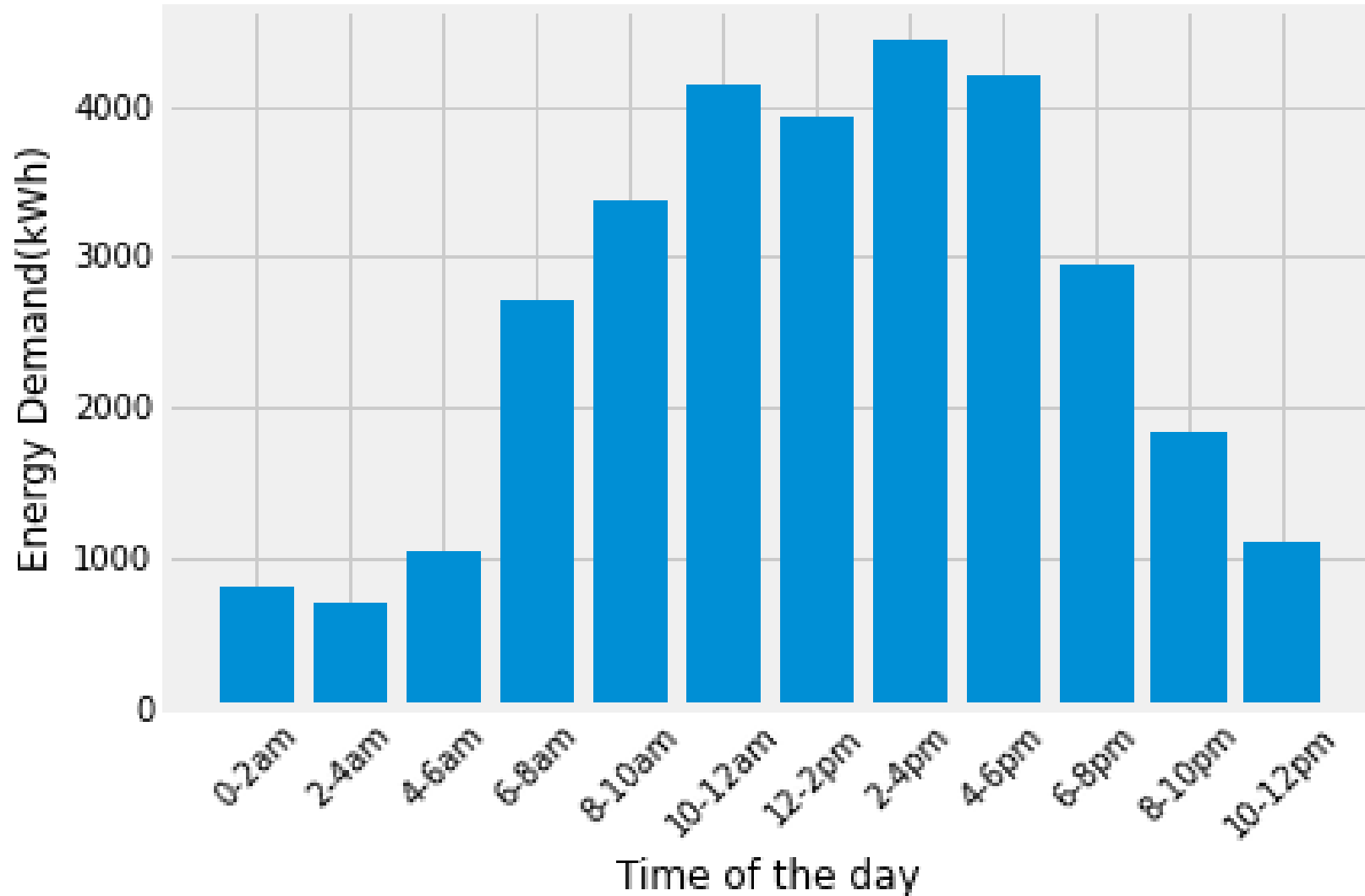


Wednesday peak ?

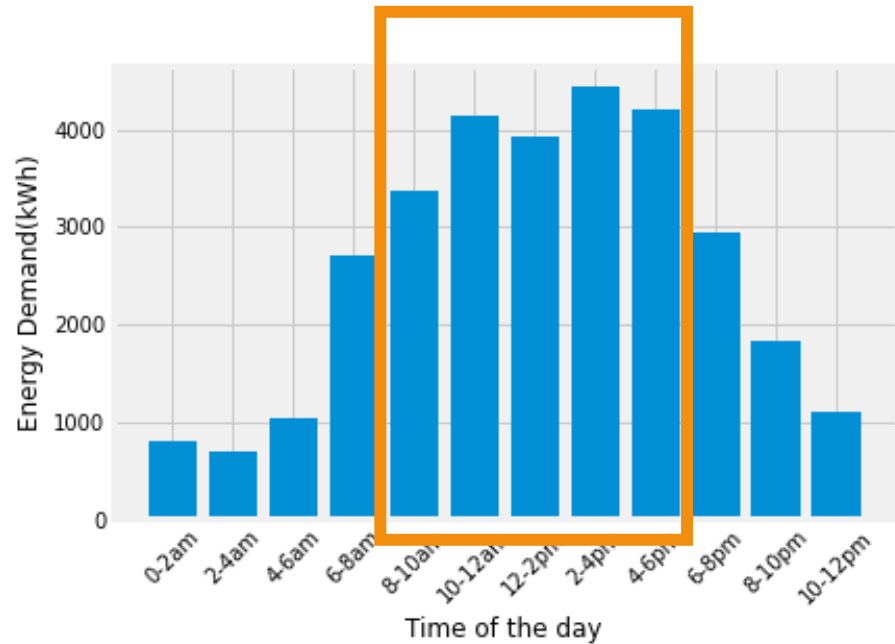
Average charging time by start time



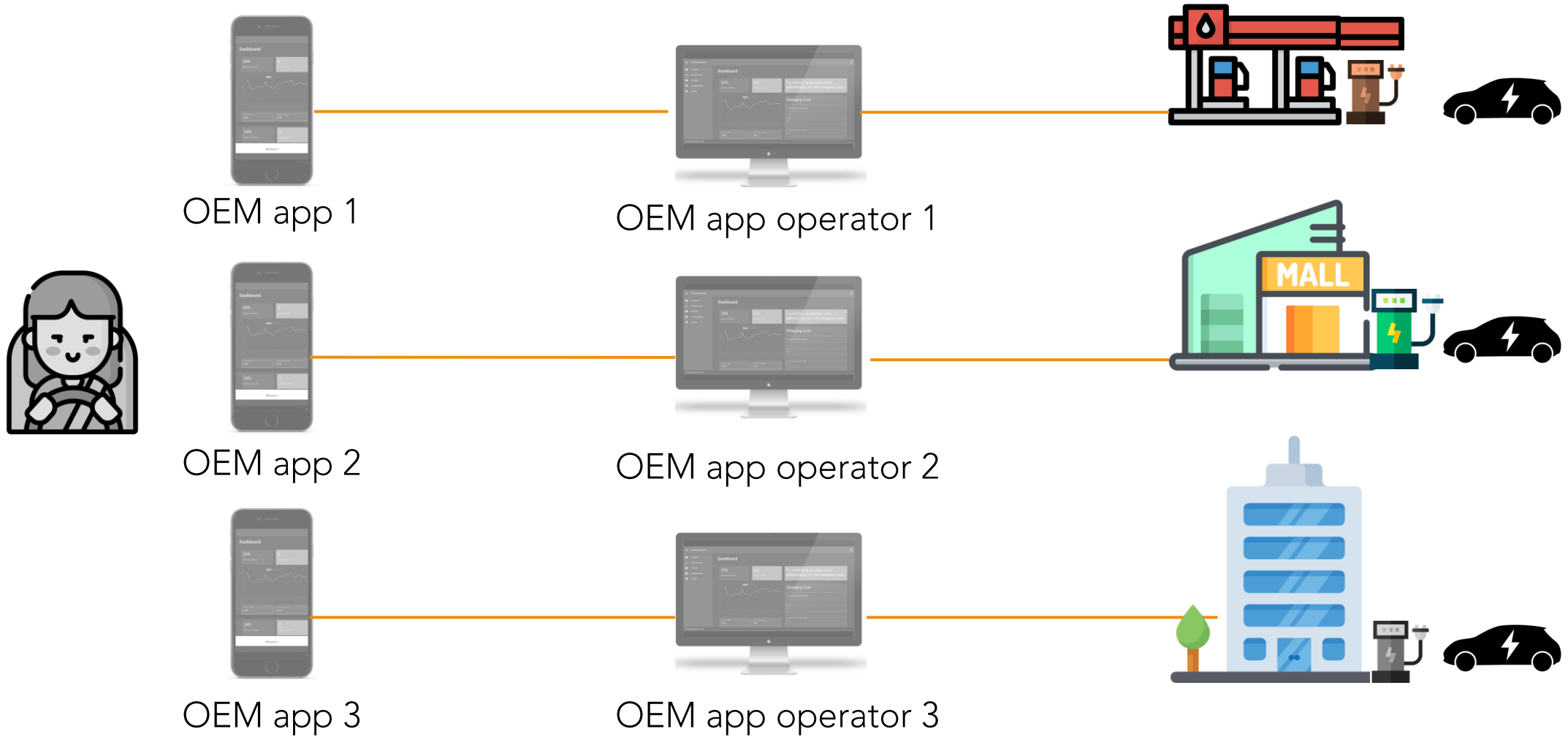
Aggregate energy consumption in charging stations tells a different story



Driver demand for public charging stations is concentrated in specific time intervals



Driver struggles with multiple apps

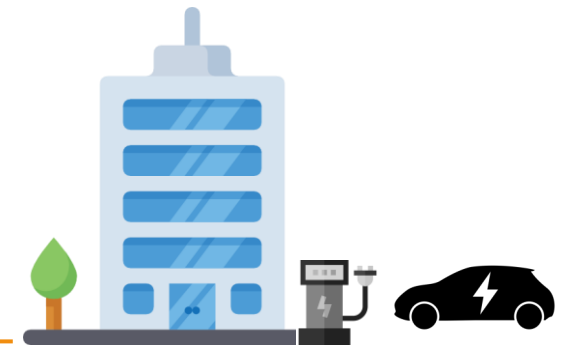
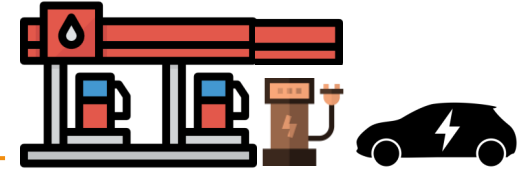
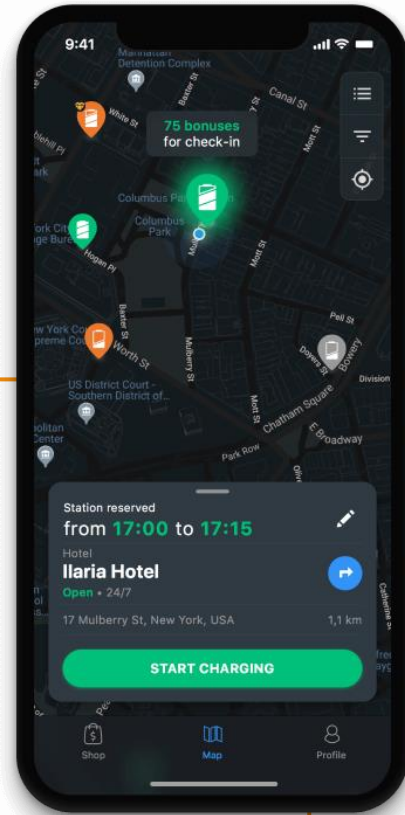


Solution

Charge Point Management app



Plan and execute charging transactions anywhere through a single app



Ocpp
Open Charge Point Protocol



← Booking info

The Mall Parking

Vehicle : Tesla Model Y

Total to pay €5.00

No Rewards.

You are reserving during **busy** hours.

Reserve two hours later and receive **100 Go To-U points**

Change time

or proceed anyway 😊

Pay with Card



← Booking info

The Mall Parking

Vehicle : Tesla Model Y

Total to pay €5.00

Select payment method

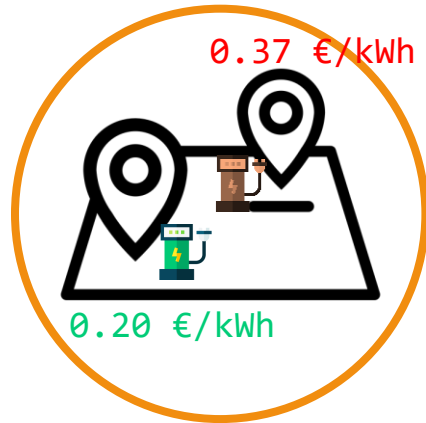
Go To-U points 400



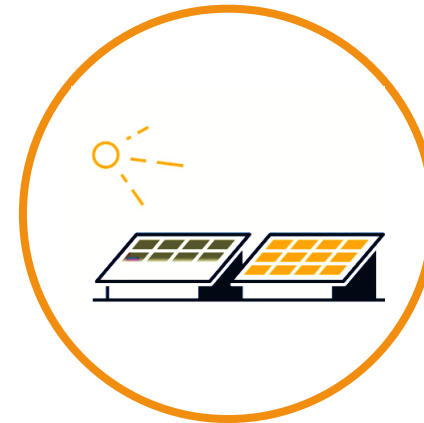
Charging during **off peak**
40 points used (10% off)

Pay with points

Steps of implementation

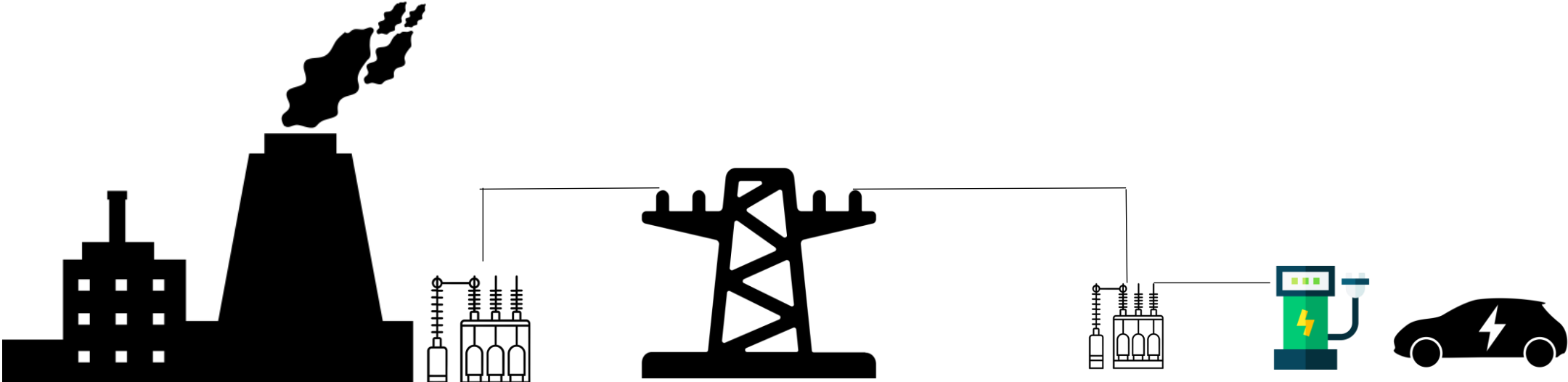


Efficient station management
Utilizing variable pricing, we encourage drivers to charge in stations with lower traffic.



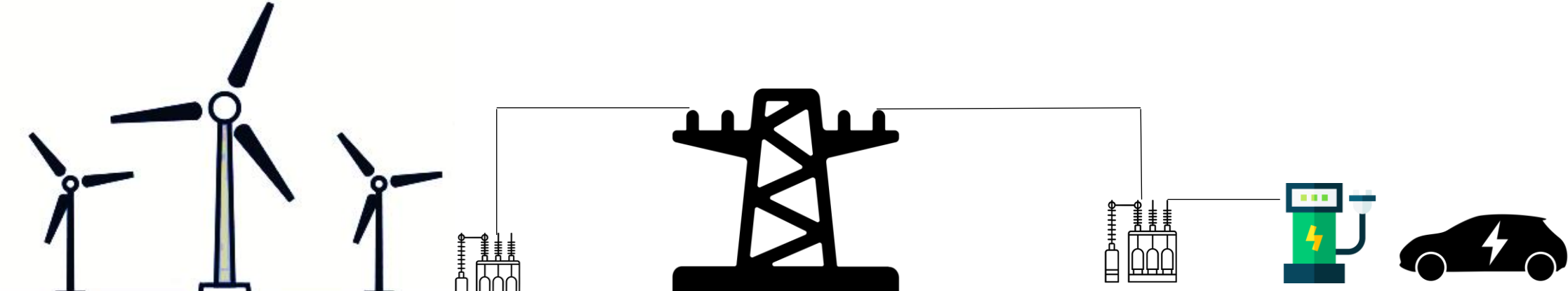
Incentivize Green Energy usage
Utilizing variable pricing, we encourage drivers to charge when there is surplus from Renewable Energy

SMART CHARGING



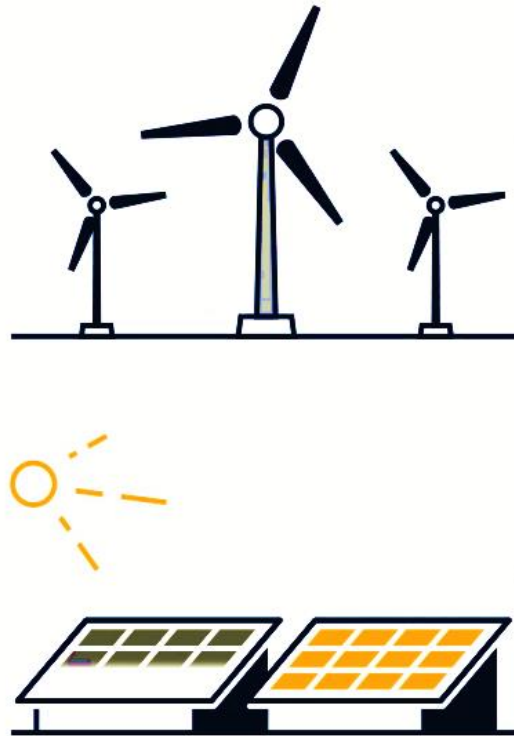
Sustainable?

SMART CHARGING

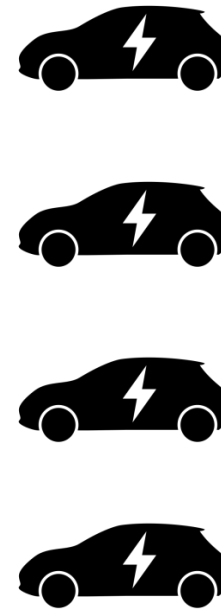


More Sustainable!

IMPACT



Surplus RES
Production



Smart timing of electric
vehicle charges can decrease
curtailment of Green Energy

Parity GoGreen

Dashboard

Charging cost is significantly lower for the next hour

Charging Co

Charging Time (minutes)

kWh

0

Visit the website:

epu.ntua.gr

